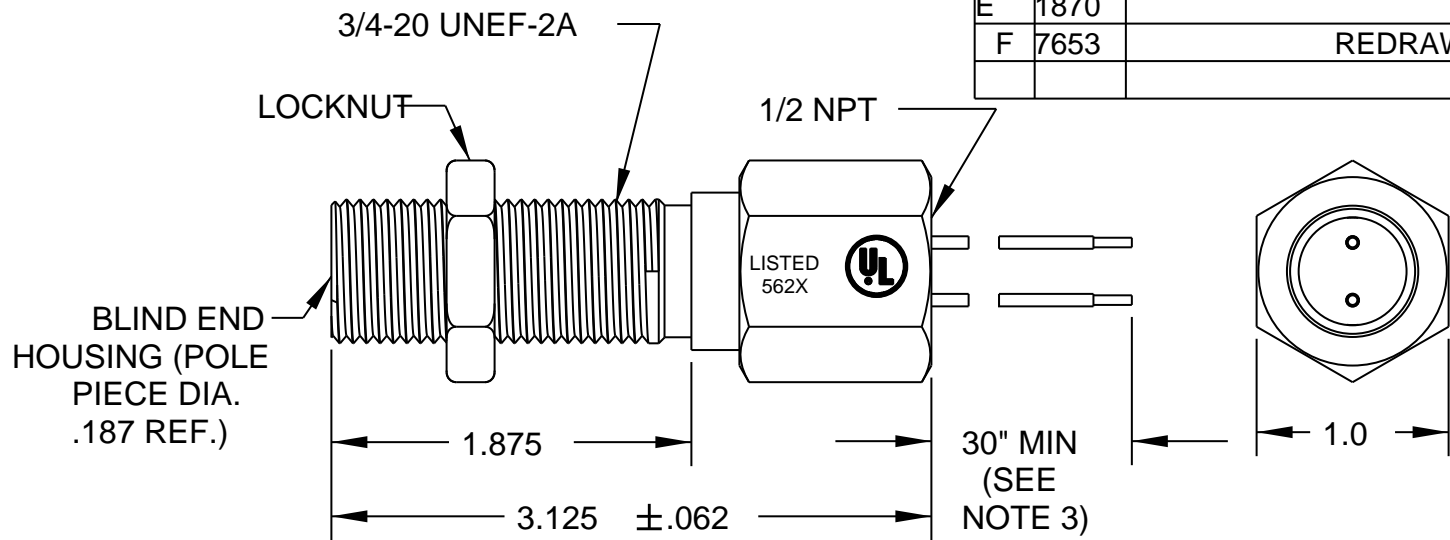


REV	ECN	DESCRIPTION	DATE	DR	CK
E	1870		1/6/95	KP	LOC
F	7653	REDRAW	9/20/11	PF	MG



LISTED WITH
UNDERWRITERS
LABORATORIES, INC.
CLASS I, GP A,B,C,D
CLASS II, GP E,F,G



CERTIFIED

CLASS 1
GROUPS A,B,C,D

TEMPERATURE RANGE	OUTPUT VOLTAGE PEAK TO PEAK	DC RESISTANCE OHMS	INDUCTANCE MILLIHENRYS	OUTPUT CONNECTOR	INSULATION RESISTANCE	NET WEIGHT
-100 ° F to +200 ° F MAX. AMBIENT OR MTG. TEMP	60-100 VOLTS (SEE NOTE 1)	170-210 AT 75 ° F	35 NOM.	NO.18 AWG LEADS (SEE NOTE 2)	100 MEGOHMS MIN. AT 500 VDC, COIL TO HOUSING	5.2 OZ. AVG.

NOTES:

- 1- TESTED AT 1000 INCHES/SECOND WITH AN 8 PITCH, 12 TOOTH GEAR, 0.005" CLEARANCE AND 100,000 OHMS.
- 2- WITH APPROACH OF FERROUS METAL, WHITE LEAD IS POSITIVE WITH RESPECT TO BLACK LEAD.
- 3- UP TO 100 ft. OPTIONAL.

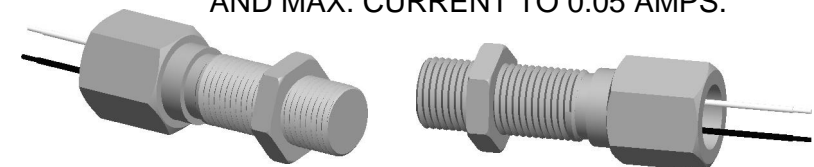
CONSTRUCTION:

HOUSING ----- 303 STAINLESS STEEL
POTTING ----- EPOXY RESIN

MOD-TRONIC

www.mod-tronic.com | sales@mod-tronic.com | 1-800-794-5883

INSTRUMENT OR INSTALLATION MUST LIMIT GENERATED VOLTAGE TO 95V RMS (270 VOLTS PEAK TO PEAK) AND MAX. CURRENT TO 0.05 AMPS.



TOLERANCES FRACT. DEC. ANGLES ±1/64 .XXX±.005 ±1/2° .XX±.01		THIRD ANGLE PROJECTION		Sheet 1 of 1	
MATERIAL		DYNALCO		MODEL M104	
FINISH		PATH MPROD\PICKUPS\M104		DRAWN PF SCALE	
		TITLE OUTLINE AND SPECIFICATIONS M104 U.L. LISTED MAGNETIC PICKUP		APPROVED HM NONE	
		DATE 03/15/78		REV F	
		A 800-1042			