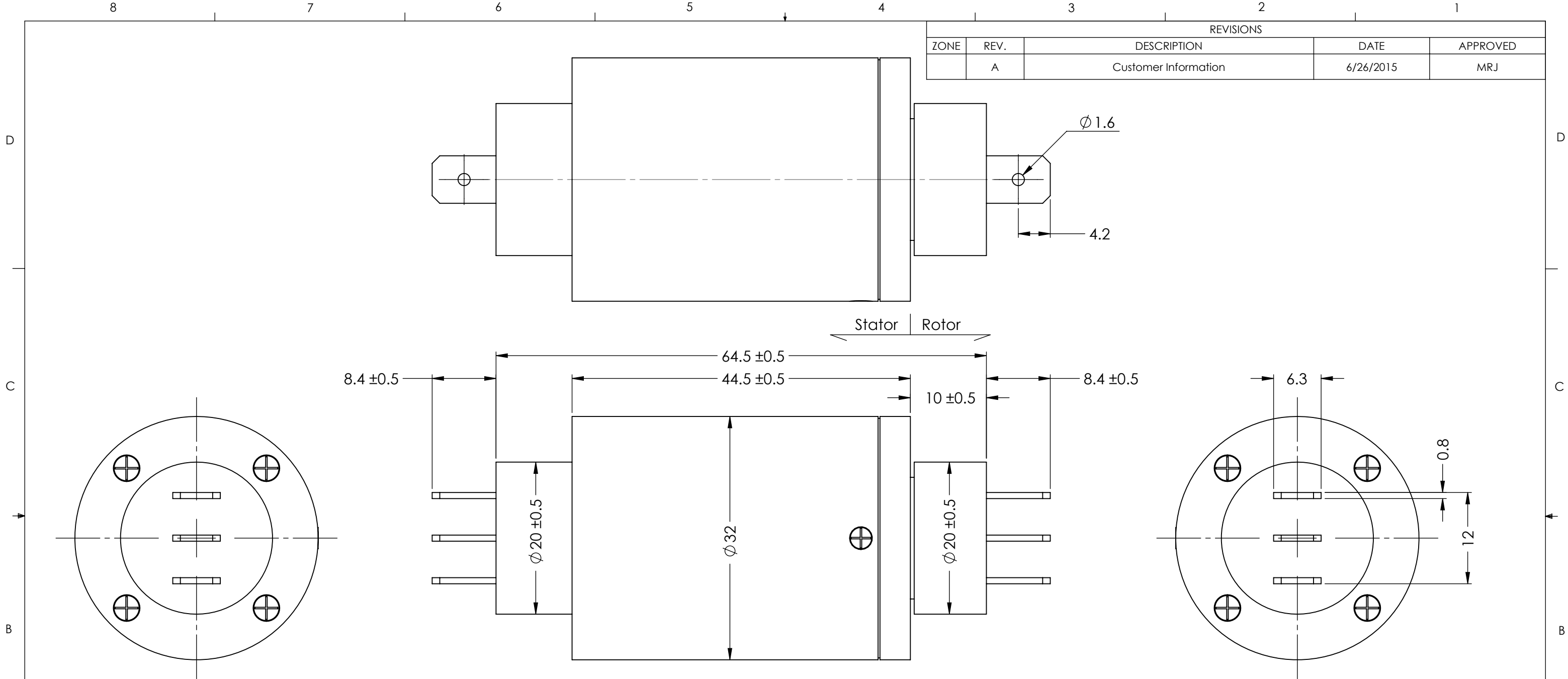
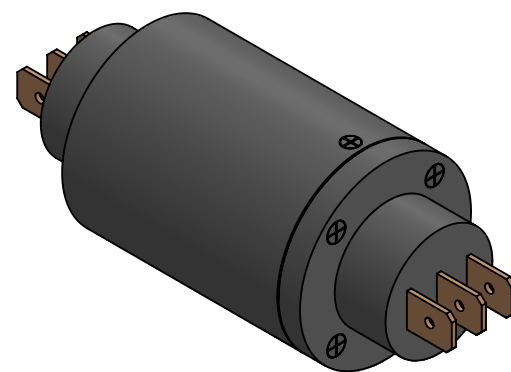


REVISIONS				
ZONE	REV.	DESCRIPTION	DATE	APPROVED
	A	Customer Information	6/26/2015	MRJ



TECHNICAL DATA	
NUMBER OF CIRCUITS	3
RATED VOLTAGE	0-240 VDC/VAC
DIELECTRIC STRENGTH	1000VAC@50Hz, 60s
RATED CURRENT	20A/ring
NOMINAL SPEED	0-250 RPM
INSULATION RESISTANCE	$\geq 500 \text{ M}\Omega/500\text{VDC}$
DYNAMIC CONTACT RESISTANCE	$< 10 \text{ m}\Omega$
CONTACT MATERIAL SURFACE	PRECIOUS METALS
TEMPERATURE	-40°C to + 80°C
BEARINGS	MINIATURE, PRECISION STEEL BEARINGS
HOUSING	ALUMINUM
PROTECTION	IP65



[www.mod-tronic.com](http://www.mod-tronic.com) | [sales@mod-tronic.com](mailto:sales@mod-tronic.com) | 1-800-794-5883

	UNLESS OTHERWISE SPECIFIED: DRAWING SYMBOLS & TOLERANCES PER ANSI Y14.5 DIMENSIONS ARE METRIC TOLERANCES: DECIMALS    LINEAR    ANGULAR .X $\pm 0.2$ $\pm 0.5\text{DEG}$ .XX $\pm 0.02$ $\pm 0.2\text{DEG}$ .XXX $\pm 0.005$ $\pm 0.01\text{DEG}$	TITLE: Slip Ring	
	INTERPRET GEOMETRIC TOLERANCING PER: ANSI Y14.5		
MATERIAL SEE CHART	SIZE <b>B</b>	PRT. NO. <b>MT3-20A-T</b>	REV <b>CI</b>
FINISH CLEAN	SCALE: 2:1		SHEET 1 OF 1
DRAWN MRJ 6/26/2015			