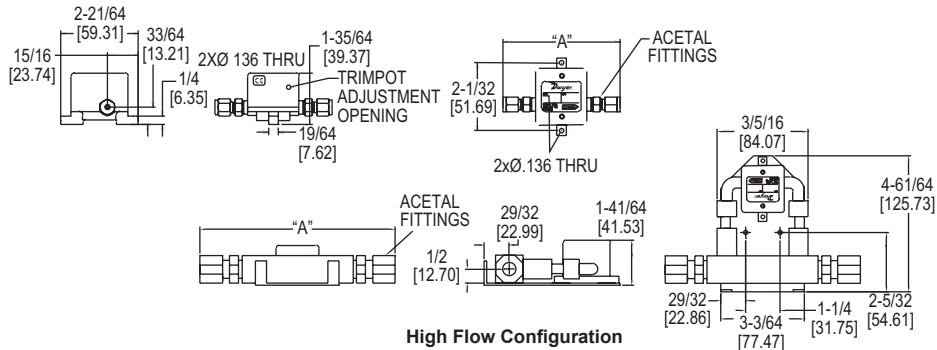




SERIES TFP-GV

GAS TURBINE FLOWMETER

PPS Body, 0 to 5 VDC Output



High Flow Configuration

The **Series TFP-GV Gas Turbine Flowmeter** utilizes a turbine wheel and electro-optical detection to convert flow rates into a linear 0 to 5 VDC output signal for recording and data logging. A power adapter or mating cable assembly is required for operation.

FEATURES/BENEFITS

- Corrosion resistant PPS body
- High repeatability with patented microturbine design
- Design accurately measures flow rates with no zero drift and no required maintenance

APPLICATIONS

- Industrial flow monitoring
- Commercial systems
- Laboratory equipment

MODEL CHART			
Model	Range	Connection	"A" (in)
TFP-GV03	.042 to .21 SCFH (.02 to .1 LPM)	1/8" OD	3-27/64
TFP-GV04	.085 to .42 SCFH (.04 to .2 LPM)	1/8" OD	3-27/64
TFP-GV05	.21 to 1.1 SCFH (.1 to .5 LPM)	1/8" OD	3-27/64
TFP-GV06	.42 to 2.1 SCFH (.2 to 1 LPM)	1/8" OD	3-27/64
TFP-GV07	.85 to 4.2 SCFH (.4 to 2 LPM)	1/4" OD	3-13/16
TFP-GV08	2.1 to 11 SCFH (1 to 5 LPM)	1/4" OD	3-13/16
TFP-GV09	4.2 to 21 SCFH (2 to 10 LPM)	1/4" OD	3-13/16
TFP-GV10*	8.5 to 42 SCFH (4 to 20 LPM)	3/8" OD	7-7/64
TFP-GV11*	21 to 110 SCFH (10 to 50 LPM)	3/8" OD	7-7/64
TFP-GV12*	42 to 210 SCFH (20 to 100 LPM)	1/2" OD	7-1/2
TFP-GV13*	85 to 420 SCFH (40 to 200 LPM)	1/2" OD	7-1/2

*These modes come in high flow configuration

SPECIFICATIONS

Service: Clean dry gases compatible with wetted materials.
Wetted Materials: PPS, acetal, sapphire, glass, epoxy, and fluoroelastomer.
Accuracy: ±3% of FS.
Linearity: ±3% of FS.
Repeatability: ±0.5% of FS.
Temperature Limits: 41 to 131°F (5 to 55°C); Storage: 32 to 158°F (0 to 70°C);
Sensitivity: ±0.2% of FS per °C.
Pressure Limits: 40 psig (2.8 bar).
Process Connection: Compression fitting, see model table.
Power Requirements: 11.5 to 15 VDC.
Power Consumption: 35 mA @ 12 VDC.
Output Signal: 0 to 5 VDC; Minimum 2.5 kΩ load.
Electrical Connections: Four-pin power and signal connector. A power adapter or mating cable required for operation. See accessories table.
Enclosure Rating: IP10 (NEMA 1).
Weight: 0.16 lb (75 g).

ACCESSORIES	
Model	Description
A-454	115 VAC power adapter and signal cable
A-455	230 VAC power adapter and signal cable
A-456	36" mating cable with spliced leads